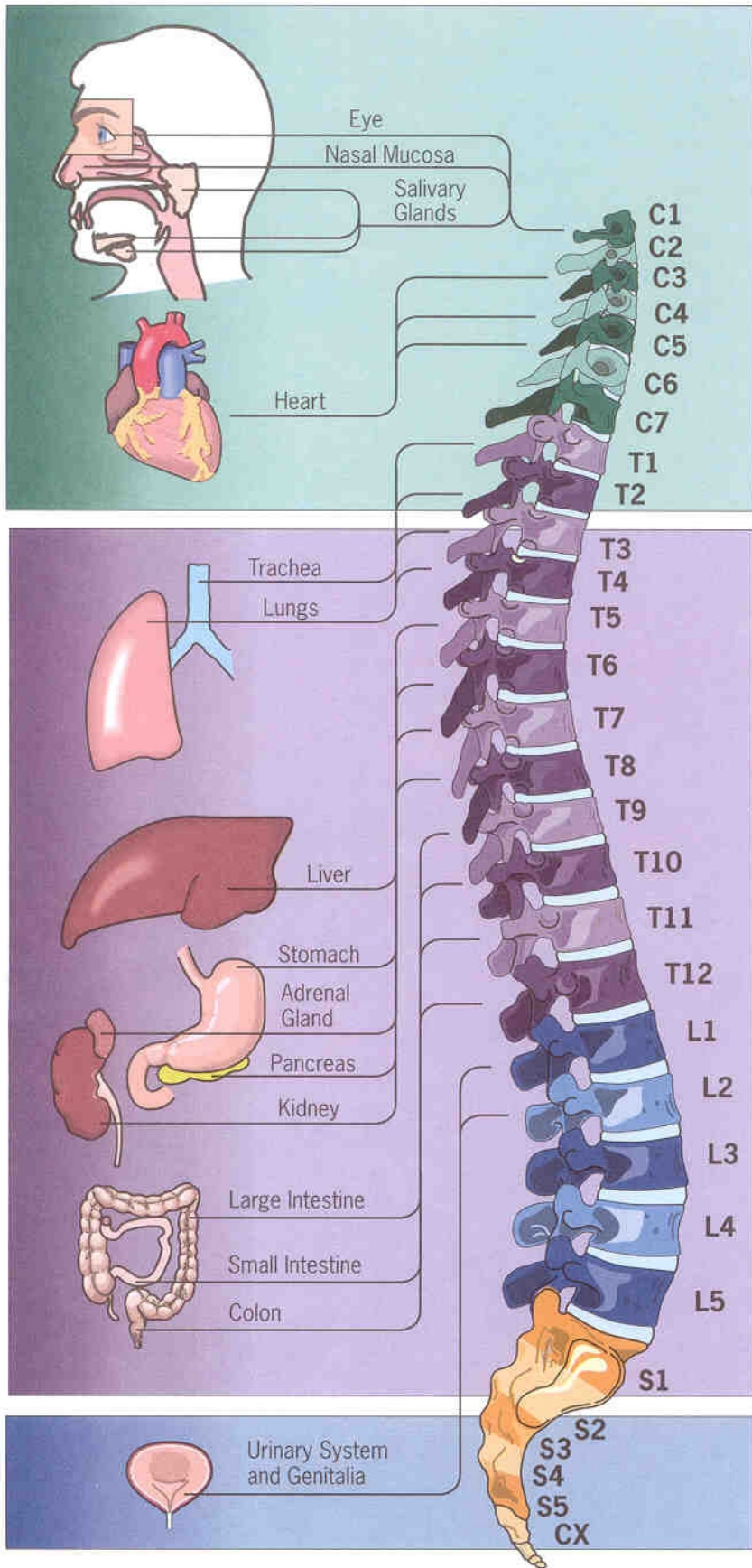


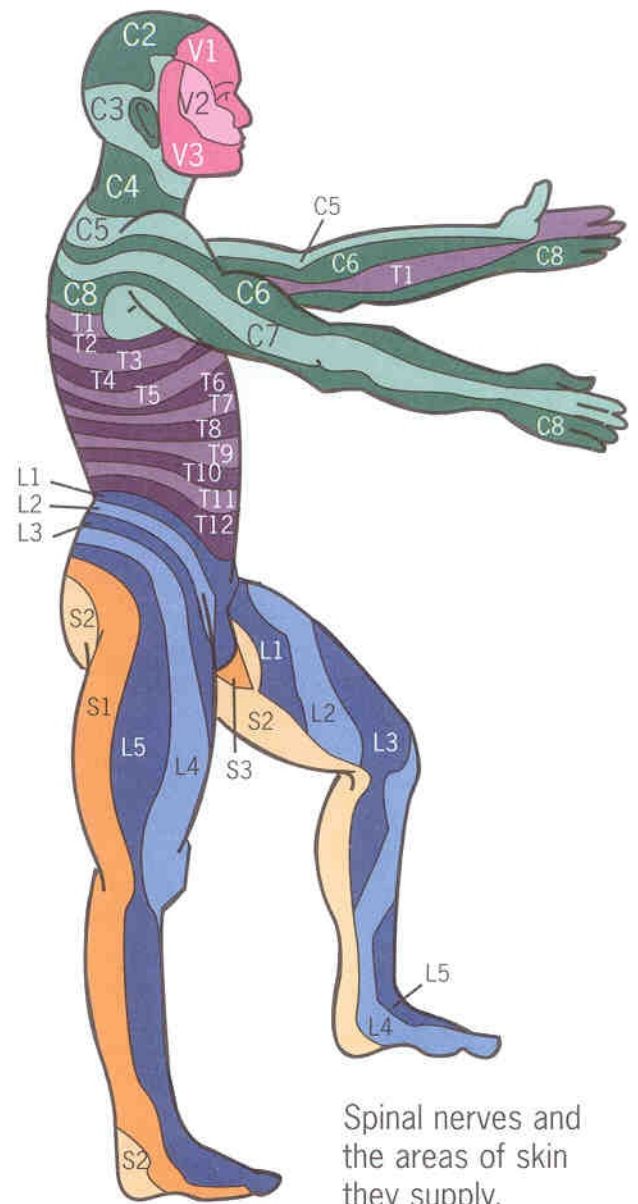
SPINAL NERVE PATHWAYS

Name _____ Birthdate _____ Date _____



Parasympathetic pathways of spinal nerves and the organs they supply.

Nerves run from the spinal cord through openings between the vertebrae. They transmit stimuli from the brain and central nervous system to and from all areas of the body such as muscles, skin, joints and internal organs. Vertebral problems can impair nerve function, affecting any area of the body.



Spinal nerves and the areas of skin they supply.